



Gloucester County
Habitat
for Humanity®

partnership
opportunities

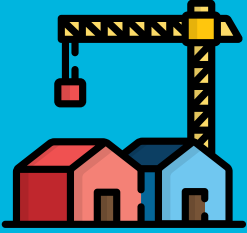


Gloucester County Habitat for Humanity brings
people together to build homes, communities and hope.

gc-habitat.org | 856-256-9400 | 425 S Broadway Pitman, NJ 08071 | Tax ID# 58-1735524



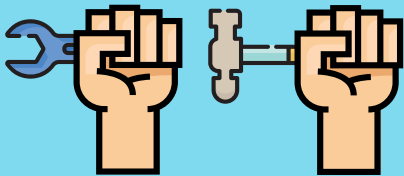
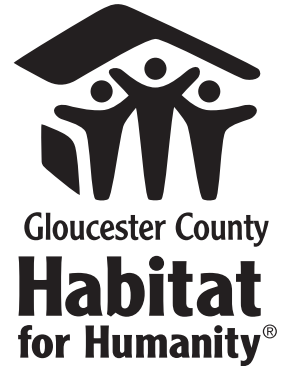
5 year impact
fye 18' - fye 22'



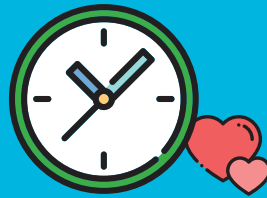
13 HOMES
BUILT

53 HOMES BUILT
SINCE 1985

8,264
VOLUNTEERS



\$1,651,124
IN VOLUNTEER
LABOR



57,853
VOLUNTEER HOURS



33
ADA COMPLIANT
RAMPS BUILT



ReStore By The Numbers



21,102
RECEIVED IN
PRODUCT DONATIONS

\$1,872,912



IN GROSS SALES TO
HELP BUILD HOMES



1,217 TONS
OF GOODS DIVERTED
FROM THE LANDFILL



Gloucester County
Habitat
for Humanity®

**team
builds**



Group Volunteer Opportunities

Corporate volunteering is an exciting way to empower your entire team and boost employee morale. Team building volunteer opportunities are great for companies of all sizes who are looking to get out of the office and make a tangible difference in your community. We ask \$100 donation per volunteer.

This donation helps to cover the costs incurred during the day as well as helps to provide the cost of construction materials. **To schedule, please contact Chris Hardgrove at chardgrove@gc-habitat.org**

ReStore

turn donations into building funds



This opportunity includes:

- Front Counter Assistants
- Receiving/Processing new donations
- Sales Floor Assistants

Max 6 volunteers per day.

Construction

help build the American Dream



This opportunity includes:

- Private build day for your group
- Hands on learning experience
- Build along side partner family

**No construction experience necessary.
Max 6 volunteers per day/due to construction
timelines build day might flex.**



Gloucester County
Habitat
for Humanity®

partnership levels

Habitat Corporate Partners are critical to our programs. Our corporate partners work with us to build safe, affordable homes to families in need. In return, we provide our partners with a wealth of benefits, including a positive effect on company morale.

	Our Partnership Levels					
	HOME SPONSOR	FOUNDATION SPONSOR	KITCHEN SPONSOR	ROOF RAISER	BACKYARD SPONSOR	TOOLKIT TEAM
	\$150,000	\$25,000	\$10,000	\$5,000	\$2,500	\$1,000
Custom Company Volunteer Photo Book						
Logo on Home Dedication Invite						
Press Release Quote or Mention						
Recognition in Newsletter						
Large Banner featured in ReStore						
Signage at Construction Site						
GCHFH Hats/T-Shirts						
Logo on GCHFH Website						
Featured on in-store ReStore TV						
Invitation to Dedication Ceremony						
Social Media Shout Out						
Number of Build Days	Unlimited	Up to 5 Build Days	Up to 4 Build Days	Up to 3 Build Days	Up to 2 Build Days	1 Build Day
Recognition	Acrylic Award, Custom Hard Hats, Foam Picture Board, & Gift Presentation in Dedication Ceremony	Plaques, Hard Hats, Foam Picture Board, & Participation in Dedication Ceremony	Hard Hats, Foam Picture Board, & Participation in Dedication Ceremony	Foam Volunteer Picture and Thank You Board	Framed Volunteer Photo & Certificate	Certificate

Ask to view detailed fulfillment information to determine what would be most impactful for your organization.



Gloucester County
Habitat
for Humanity®

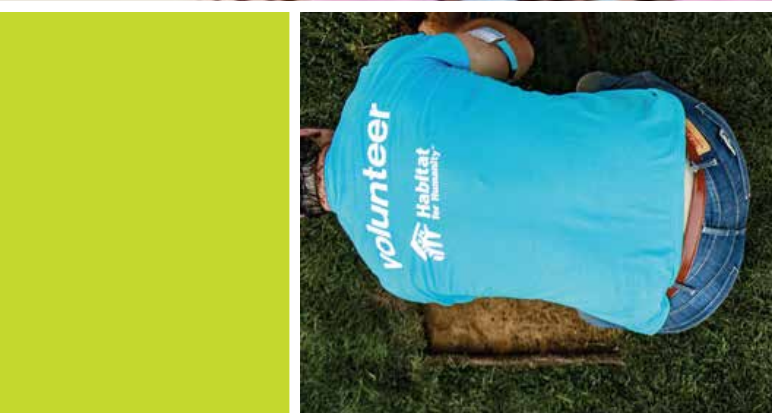
the impact of your support



Brick by brick and nail by nail, volunteers are undoubtedly what make Habitat for Humanity a pillar of strength in communities in Gloucester County and around the globe. The ability to leverage these volunteers whose hearts are set on creating positive change where they live and work - truly makes an impact one family at a time, one home at a time. Partners like you understand the true difference between a house and a home and, because of your generous support, Gloucester County Habitat for Humanity has been able to help low-income families experience the dream and stability of homeownership

A partnership with Gloucester County Habitat for Humanity is more than a campaign to raise money. It is a movement of people coming together to get us back to the grassroots of local business, civic events and church engagements, designed to uplift our communities. It is engaging to build systems, processes, resources and business efficiencies that support and sustain our local Habitat affiliate.

We need you as our partners to continue this mission in Gloucester County.



Gloucester County
Habitat
for Humanity®

Throughout the year, Gloucester County Habitat for Humanity produces signature events to raise awareness and funds for affordable housing. These events consistently attract audiences composed of corporate executives, philanthropists, and community leaders. Each event offers excellent exposure and benefits to Habitat sponsors. Below take a look at our various sponsorship packages for each of our events.



The event provides a unique opportunity for women to have a direct role in creating affordable housing solutions through construction, collaboration, and advocacy. Whether you're already a handywoman or have never picked up a drill, Women Build is a platform where all women can assist in building a better Gloucester County.



We proudly launch our annual Pride Build event to invite members of the LGBTQ+ community and their allies to help us build a home for a family in need. Habitat's Pride Build focuses on building an inclusive Gloucester County community where every individual and family has the opportunity to obtain fair and equitable housing.



Women in Business is a group opportunity to spotlight women and celebrate their leadership and hardwork. These memorable days volunteering at the Pitman ReStore help build stronger teams while providing employees a unique way to give back to their community.



The annual golf outing is one of our organization's major fundraising events and has raised over \$600,000 to help to provide stable and affordable housing. Traditionally, the golf outing is a sold-out event, attracting close to 144 business owners and professionals from the local community. It is a unique audience that will allow you to gain targeted visibility for your company.



Gloucester County
Habitat
for Humanity®

BOARD OF DIRECTORS

Ronda Abbruzzesse, President
Nexus Properties
Fundraising/Marketing Committee Chair

Dan Paradis, Vice President
Retired

Dick Woodward, Secretary
The Business/Technology Interface

Tim Golden, Treasurer
Managing Director (Ret.) Duff & Phelps, LLC
and Partner (Ret.) PwC LLC

Bob Harris
Pitman Animal Hospital
Construction Committee Chair

Catherine B. Allen-Carlozo
HFM Investment Advisors
Restore Committee Chair

Bruce Roesler
Retired
Family Selection Committee Chair

Barb Capelli
Energy Consultant/Real Estate Agent

Amar A. Agrawal
Eisenberg, Gold, & Agrawal, P.C.

Bani Lariche
RE/MAX Preferred of Sewell

Kristen Whyte
Rowan College of South Jersey

Joe Brigandi
RE/MAX Preferred of Sewell

STAFF

Ashley Griffiths
Executive Director

Christopher Hardgrove
Resource Development Director

Sonny Winters
Project Manager

Gene Weaver
ReStore Manager

Jeremy Sheridan
ReStore & Donations Ambassador

Aydee Moran-Caso
Administrative Assistant

OUR VISION

A World Where **Everyone** Has A Decent Place To Live.



About Gloucester County Habitat

Gloucester County Habitat for Humanity (GCHFH) is part of a global, nonprofit housing organization operated on the principles that seeks to put God's love into action by building homes, communities and hope. We partner with local businesses, churches, and volunteers to help build homes with qualifying families. Volunteers provide most of the labor, and individual and corporate donors provide funds and materials to build Habitat houses.

A hand up, not a handout – at GCHFH we empower families between 50% and 80% of the area median income, with pathways out of low-asset poverty. Housing is often the greatest expense for families. Our model ensures that expense is affordable – guaranteeing mortgage payments will be no more than 30% of a family's monthly income at the time of closing. Families also contribute "sweat equity", playing a critical part in the transformation of the community.

With the generous support of donors and volunteers, GCHFH has made a lasting and meaningful impact in our community by helping local families reach their dreams of homeownership and furthering Habitat's goal of affordable housing.